



TICKET
to **Work**

Helping You Today
So You Succeed Tomorrow



Ticket to Work and the Path to Employment

Date:
Wednesday,
March 24, 2021

Time:
3 – 4:30 PM ET



Produced at U.S. taxpayer expense.

Accessing Today's Webinar (Slide 1 of 3)

You can manage your audio using the audio option at the top of your screen (it will look like a microphone or telephone icon).



Accessing Today's Webinar (Slide 2 of 3)

All attendees will be muted, and we encourage you to attend by choosing “**listen only**” from the audio menu. This will enable the sound to be broadcast through your computer, so please make sure your **speakers are turned on or your headphones are plugged in.**



Join Audio Conference

How would you like to join the meeting's audio conference?

Dial-out [Receive a call from the meeting]

+1 (USA)

Dial-in to the Audio Conference via Phone

Join Listen Only

Accessing Today's Webinar (Slide 3 of 3)

If you do not have sound capabilities on your computer or prefer to listen by phone, dial:

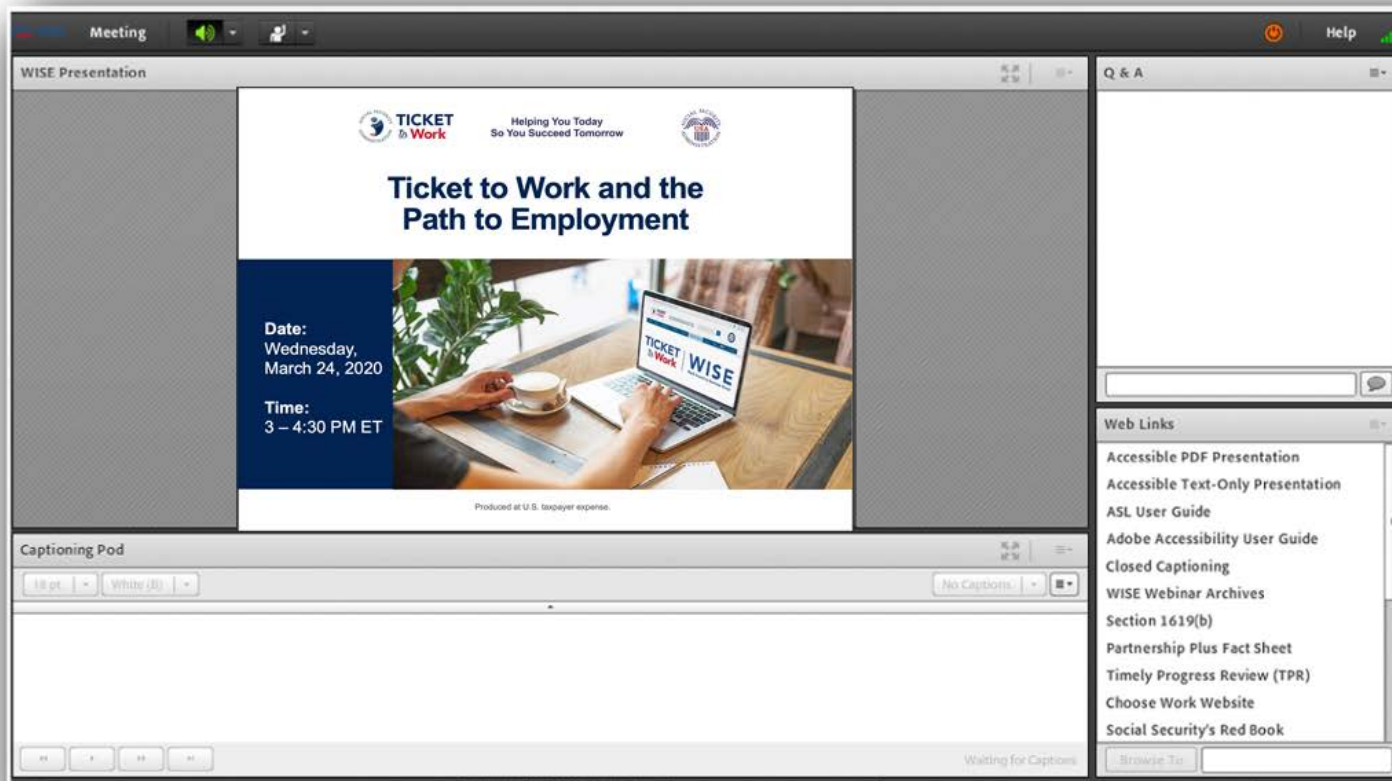
Toll-free number: **1-800-832-0736**

Access code: **4189148#**

Webinar Accessibility



Adobe Connect Platform



Adobe Connect Accessibility User Guide

Should you need assistance navigating Adobe Connect, the link below directs you to an Accessibility User Guide complete with a list of controls.

New Keyboard Shortcuts	
CTRL + M	Toggle Microphone on (locked) or off.
CTRL + UP ARROW	Toggle Raise Hand Status.
CTRL + .	Toggle Full Screen Mode. Applies to currently selected Share Pod.
CTRL + '	Promote to Host. Requires selected attendee(s) in the Attendee List.
CTRL +]	Demote to Participant. Requires selected attendee(s) in the Attendee List.
CTRL + /	Promote to Presenter. Requires selected attendee(s) in the Attendee List.
CTRL + ,	Start/Stop Recording (toggle). For Start, brings up the Start Recording Dialog.
CTRL + \	End Meeting. Brings up the End Meeting Dialog.
CTRL + [Start/Stop Desktop Sharing. Applies to currently selected Share Pod.
CTRL + SPACE	Opens up left most menu for keyboard navigation.

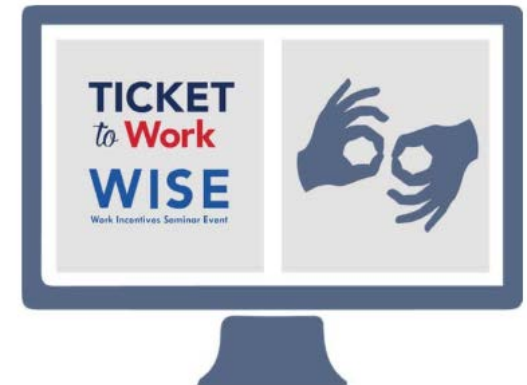
<http://bit.ly/adobe-accessibility>

Captioning

- Real-time captioning is provided during this webinar
- The captions can be found in the **Captioning pod**, which appears below the slides
- You can also access captioning online:
<http://bit.ly/captions-mar2021>

American Sign Language (ASL)

- If you're fluent in **ASL** and would like support during today's webinar, follow the link below that provides instructions to connect with an interpreter through the Federal Communications Commission (FCC) Video Relay Service (VRS)
- ASL User Guide:
<http://bit.ly/ASL-guide>



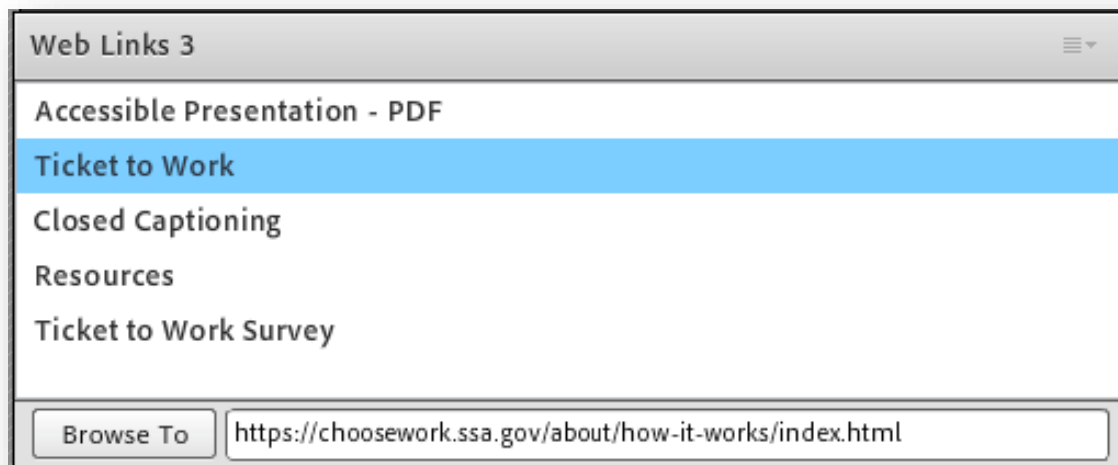
Questions and Answers (Q&A)

- For Q&A: Please use the **Q&A pod** to submit any questions you have during the webinar, and we will direct the questions accordingly during the Q&A portion
- If you are listening by phone and not logged in to the webinar, you may also ask questions by emailing questions to webinars@choosework.ssa.gov



Webinar Online Resources

- Please use the **Web Links pod** to find the resources presented during today's webinar
- If you are listening by phone and not logged in to the webinar, you may email webinars@choosework.ssa.gov for a list of available resources



Archived Events

Please note: This webinar is being recorded, and the archive will be available within 2 weeks on the Choose Work website at http://bit.ly/WISE_OnDemand.

The screenshot shows the 'WISE On Demand' page on the Ticket to Work website. At the top, there is a navigation bar with links for Home, About, Success Stories, Find Help, Find a Job, Webinar & Tutorials (which is highlighted), Library, Blog, and Contact. A search bar is located on the right side of the header. Below the navigation bar, the breadcrumb trail reads 'You are here: Home / Webinars & Tutorials / WISE On Demand'. The main content area features the 'WISE On Demand' title and a brief description: 'Our free, monthly WISE webinars provide information you can use on your path to financial independence through work. Discover programs, resources and information while learning about how Social Security's Ticket to Work Program can help. [Learn more](#) and [register](#) today for this month's webinar!'. A list of webinar topics is provided, including 'December 2020: Ticket to Work and Mental Health', 'November 2020: Debunking the Three Biggest Myths about Disability Benefits and Work', 'October 2020: Working from Home with Ticket to Work', 'September 2020: Understanding Ticket to Work: How to Help Your Clients and the People You Serve', 'August 2020: Ticket to Work and the Path to Employment', 'July 2020: Reasonable Accommodations and the Path to Employment', 'June 2020: Ticket to Work and Mental Health', 'May 2020: Working from Home with Ticket to Work', 'April 2020: Support on Your Journey to Employment', 'March 2020: Expanding Your Job Search with Ticket to Work', 'February 2020: Choosing a Service Provider That's Right For You', and 'January 2020: Debunking the Three Biggest Myths About Disability Benefits and Work'. On the right side of the page, there is a logo for 'TICKET to Work WISE Work Incentive Seminar Event ON DEMAND'.

Technical Assistance

If you experience any technical difficulties during the webinar, please use the **Q&A pod** to send a message, or you may email webinars@choosework.ssa.gov.



Presenters

Welcome and Introductions

Moderator: Sarah Hyland, WISE Moderator

Presenter: Raymond A. Cebula, III, J.D., Cornell University

Welcome!

Thank you for joining us! Today, we'll discuss how Social Security's Ticket to Work (Ticket) Program can help you and answer questions related to:

- Social Security's Ticket Program
- Ticket Program Service Providers
- Benefits Counseling and the Path to Work





Ticket to Work Program: Support on Your Path to Work

Social Security Disability Benefits Programs



Social Security Disability Insurance (SSDI)



Supplemental Security Income (SSI)



Starting the Journey

Only you can decide if work is the **right choice for you.**



Why Choose Work?

Earning a living through employment is not something everyone can do, but it may be **right for you**. Once people understand the many **free services and supports** available to them, they often find that the rewards far outweigh the risks.



What Is the Ticket to Work Program? (Slide 1 of 2)

The Ticket to Work Program

- Is a free and **voluntary** Social Security program
- Offers **career development** for people ages 18 through 64 who receive Social Security disability benefits and want to work



What Is the Ticket to Work Program? (Slide 2 of 2)

The Ticket to Work Program connects you with **free employment services** to help you:

- Decide if working is right for you
- Prepare for work
- Find a job
- Succeed at work



Ticket to Work Help Line

Social Security's Ticket to Work Program offers a Help Line to support you on your journey to financial independence.

Call the Ticket to Work Help Line:

Monday – Friday 8:00 am – 8:00 pm ET

- 1-866-968-7842
- 1-866-833-2967 (TTY)



Ticket Program Service Providers



Who Can Help You Achieve Your Work Goals?

Through the Ticket Program, you'll have access to a variety of **Ticket Program service providers**, including:

- Employment Networks (EN)
- Workforce ENs (WF)
- State Vocational Rehabilitation (VR) agencies
- Work Incentives Planning and Assistance (WIPA) projects
- Protection and Advocacy for Beneficiaries of Social Security (PABSS) organizations



Employment Network (EN)

An EN is a private or public organization that has an agreement with Social Security to provide **free employment support services** to people who are eligible for the Ticket Program.

- Many state public workforce systems, such as American Job Centers, are **Workforce ENs**



How Can Working with an EN Help You?

Services and supports are designed to help you on the path to financial independence through work and can include helping you to:

- Identify your **work goals**
- Write and review your **resume**
- Prepare for **interviews**
- Request **reasonable accommodations**
- Receive **benefits counseling**



State Vocational Rehabilitation (VR) Agency

A State VR agency provides a wide variety of services to help people with disabilities return to work, enter new lines of work or enter the workforce for the first time. A State VR agency can offer benefits counseling and may also be able to help you with:

- **Vocational rehabilitation**
- **Training and education**

Some states have separate VR agencies that serve individuals who are blind and visually impaired.



What Is Partnership Plus?

Partnership Plus is an agreement that allows State VR agencies to partner with ENs to provide a **transition of services** for those who need **ongoing support**.

- VR agencies typically close your case approximately 90 days after you start working
- An EN may offer you continued support services to maintain employment and increase your earnings over time



choosework.ssa.gov/library/partnership-plus

Work Incentives Planning and Assistance (WIPA) Projects

WIPA projects are staffed by Community Work Incentives Coordinators (CWIC) who:

- Provide **free benefits counseling** to Social Security disability beneficiaries about how work and earnings will affect your SSDI, SSI, Medicare or Medicaid and other public benefits
- Help you understand **Social Security Work Incentives** and how they apply to you
- Explain the potential **benefits of employment** and **dispel myths** about working
- Help you decide if the services and supports from the Ticket Program are **right for you**



Whom Do WIPA Projects Serve?

The Ticket to Work Help Line will refer you to a WIPA project if you receive SSDI, SSDI-related Medicare, SSI or SSI-related Medicaid and you:



- Are currently **working** or **self-employed**
- Have a job offer **pending**
- Are actively **interviewing** for jobs
 - Had an interview in the past 30 days
 - Have a job interview scheduled in the next 2 weeks
- Are **age 14–25**, even in the earliest stages of considering work

Protection and Advocacy for Beneficiaries of Social Security (PABSS) (Slide 1 of 2)

- PABSS organizations provide **free legal assistance** to people who receive Social Security disability benefits and who have disability-related employment issues
- PABSS services may include:
 - **Legal support**
 - **Advocacy**
 - Information to help beneficiaries **resolve employment-related concerns** with employers, Social Security, ENs, State VR agencies, WIPA projects or others



Protection and Advocacy for Beneficiaries of Social Security (PABSS) (Slide 2 of 2)

PABSS services may also provide help with:

- Navigating organizations and services to support your effort to work and **protect your rights**
- **Requesting** reasonable accommodations in your workplace, college classes, training courses, and licensing programs
- Addressing other **disability-based legal issues** that are barriers to employment



How Do You Find a Service Provider?

- If you're ready to find a service provider, visit choosework.ssa.gov/findhelp
- Search by:
 - ZIP code
 - Services offered
 - Disability type
 - Languages spoken
 - Provider type (EN, Workforce EN, VR, WIPA or PABSS)
- Or call the **Ticket to Work Help Line** for a list of service providers at **1-866-968-7842** or **1-866-833-2967 (TTY)**
Monday – Friday 8:00 am – 8:00 pm ET



Questions?



Benefits Counseling and the Path to Work



Myth



My friend told me he went to work and lost his disability benefits. This is going to happen to me, too.

False!

Both SSI and SSDI have rules that allow you to try working without worrying about losing your benefits right away. Connecting with a **Benefits Counselor** can help you find more information about your particular situation!



What Is Benefits Counseling?

If you receive Social Security disability benefits (SSDI/SSI) and are considering returning to work or working for the first time, you may have questions about **how earnings from work will affect your benefits.**

Benefits counseling is a **free service** offered by many Ticket Program service providers to explain how earnings from work will affect your federal and state benefits.

Benefits Counseling

Benefits Counselors can help you understand how earnings from work will affect federal and state benefits, such as:

- Healthcare benefits, including Medicare and Medicaid
- Social Security Disability Insurance (SSDI)
- Supplemental Security Income (SSI)
- Housing assistance
- Supplemental Nutrition Assistance Program (SNAP)/food stamps

Finding a Benefits Counselor

There are 3 types of service providers that offer access to benefits counseling:

- Work Incentives Planning and Assistance (WIPA) projects
- State Vocational Rehabilitation (VR) agencies
- Employment Networks (EN)



Benefits Counseling and the Path to Employment

Learn more about benefits counseling in our fact sheet, **Benefits Counseling and the Path to Employment.**



<https://bit.ly/ttw-benefits-counseling>

Additional Resources



Taking the Next Step

Only you can decide if work is the right choice for you.

It's a big decision that requires:

- Understanding how earnings from work will affect your Social Security disability benefits and other benefits
- Support **finding** and **keeping** a job

Ticket to Work is here to help!



Finding a Job

- Check out our **Find A Job** page!
- We provide resources and information about employment organizations, including those that specifically serve people with disabilities.
- Get started on your job search and connect with a Ticket Program service provider along the way!



[choosework.ssa.gov/
find-a-job/index.html](https://choosework.ssa.gov/find-a-job/index.html)

Returning to His Roots (1 of 3)

It's been 7 years since we met Rob. He once received Social Security Disability Insurance. Now he is employed full-time and financially independent.



choosework.ssa.gov/library/rob-success-story-update

Returning to His Roots (2 of 3)

- Rob had to sell his family home 20 years ago due to bankruptcy brought on by his illness.
- Now the house is his again, a tangible legacy that he can pass to the next generation.
- His tenacity, work ethic, courage and support from his community and the Ticket Program all made it possible.



Returning to His Roots (3 of 3)

“Working as part of a family team... blending my history with [my wife's] is so rewarding. Planning for a future on this land feels like a major milestone for me. When I was sick, I had to give up a lot. Getting back to work helped me to a dramatically better lifestyle. Ticket to Work and Work Incentives helped me get there.”

Rob

A Ticket to Work Success Story

Questions?



How to Get Started

Social Security's Ticket to Work Program has a variety of service providers and other resources ready to help you get started!

Call the Ticket to Work Help Line:

- 1-866-968-7842
- 1-866-833-2967 (TTY)

Visit: choosework.ssa.gov

Connect:

Visit choosework.ssa.gov/contact/index.html to find us on social media and subscribe to blog and email updates!





Opt-In to Receive Text Messages

- Get advice and encouragement, and read stories about people who achieved financial independence with help from the Ticket to Work Program.
- If you're interested in receiving text messages from the Ticket Program, please text **TICKET** to **474747**. Standard messaging rates may apply.

Join Us for Our Next WISE Webinar!

TICKET
to **Work**

WISE
Work Incentive Seminar Event

Ticket to Work: Healthcare and the Path to Employment

Date: Wednesday, April 28, 2020

Time: 3 – 4:30 PM ET

**Register online: choosework.ssa.gov/wise
or call 1-866-968-7842 or 1-866-833-2967 (TTY)**

Tell Us What You Think!

Please remember to take our webinar survey!

A link will pop up after the webinar, or visit:
choosework.ssa.gov/surveys/wise.

